



Area Health Education Consortium

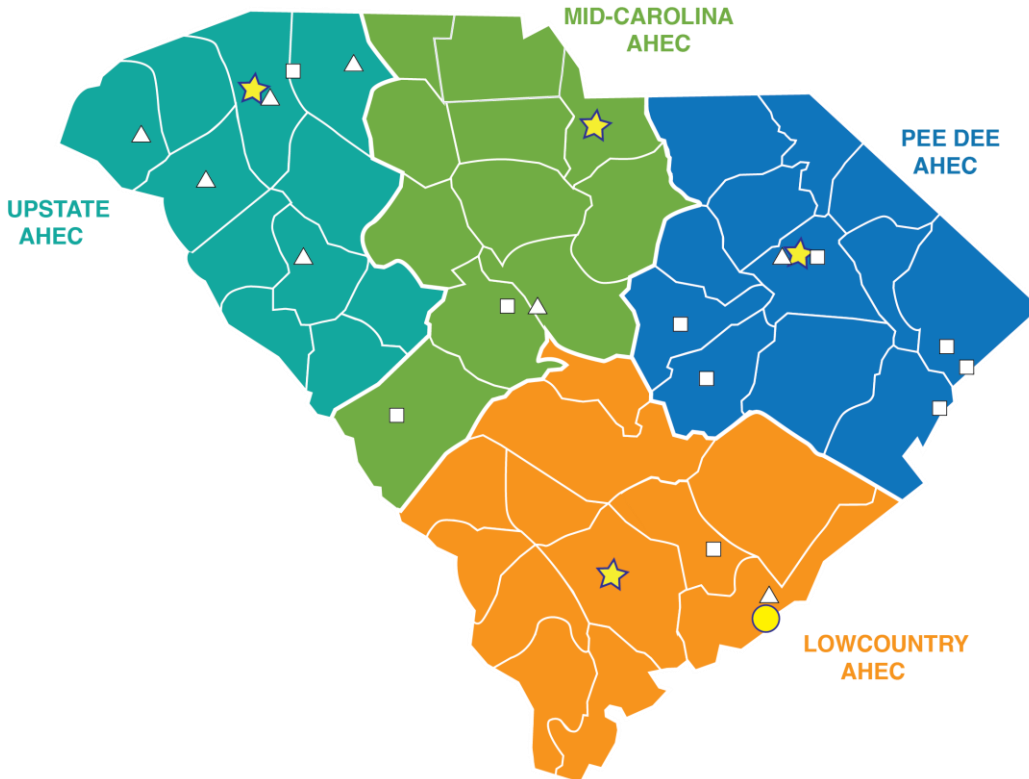
H530 | FY 2024-2025 Budget Hearing | January 17, 2024

Agency Attendees

Ann Lefebvre, MSW, CPHQ
Executive Director

Ali McMenamin, MA
Director of Communications

South Carolina AHEC



★ 4 regional centers serve the entire state

● 1 program office housed at MUSC

△ 8 family medicine residency programs receive family practice appropriations via AHEC

□ 10 new family medicine residency program partners

Program Areas



Health Careers Program

Supports diverse high school and college students on their paths to becoming healthcare professionals, building a future healthcare workforce that is representative of the communities it serves.



Recruitment & Retention Program

Provides financial incentives to healthcare professionals who practice in rural and underserved areas to improve the distribution of providers statewide.



Health Professions Student Program

Provides community-based training experiences, exposing students to the opportunities of working in rural and underserved areas of South Carolina.



Continuing Professional Development

Enhances clinical skills, addresses ongoing and emerging health trends and helps professionals maintain their licensure and certifications.



Graduate Medical Education

Works collaboratively with all of the family medicine residency programs in the state to facilitate recruitment for high-quality training in family medicine in South Carolina.



SC Office for Healthcare Workforce

Analyzes data and provides policy-relevant information about the healthcare workforce in South Carolina.

Budget Requests

South Carolina AHEC requests level funding for FY25.

South Carolina AHEC has no:

- Recurring requests
- Non-recurring requests
- Capital requests
- Proviso requests

A Thank You

AHEC is submitting a level funding request as we adjust to recent increases in state and federal funding. This will allow us to compile accurate data on programming needs to support future funding requests.

Recently increased funding supports:

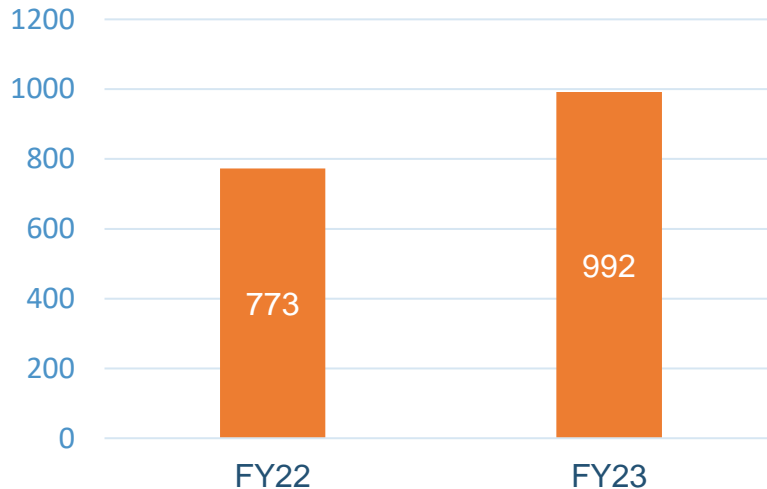
- More high school students exposed to health careers
- More rural housing and better work with clinical sites for health professions students
- More dentists funded to practice in rural/underserved areas
- New behavioral health loan repayment program (federally funded)
- More in-depth analysis to address nursing workforce

Updates on Funding Increase Outcomes

FY23 Increased Funding Update:

AHEC Health Careers Program

Students Served



- \$670,000 increase in recurring funds for FY23
- New HCP Coordinators hired at each regional AHEC center
- 28% increase in students served

Last
Fiscal
Year

1,416

Contact hours of job shadowing accrued by students statewide

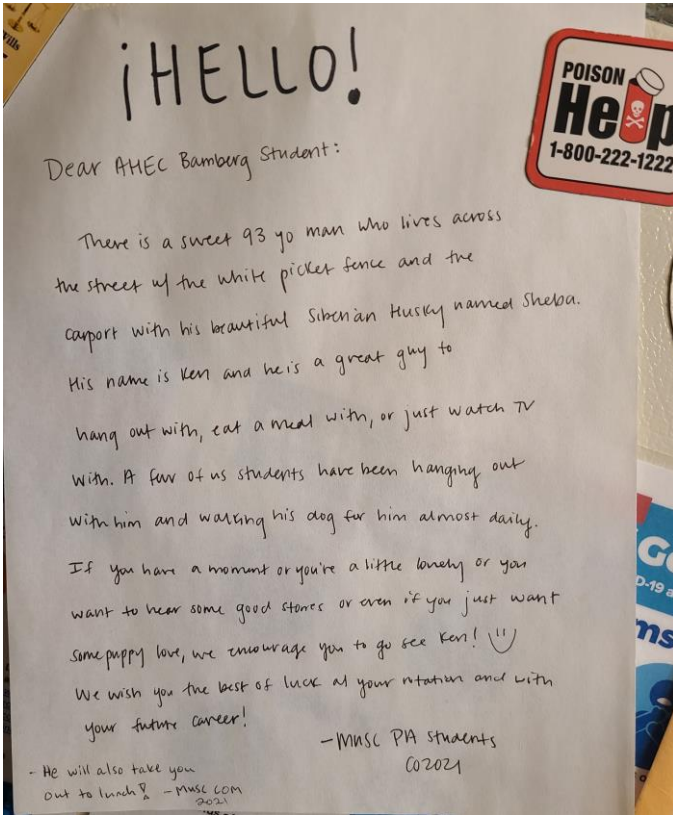
55%

HCP students identified as Black, Indigenous and/or People of Color*

*Percent of total students for whom race/ethnicity data was available/provided

36%

HCP students from rural areas



FY24 Increased Funding Update:

AHEC Health Professions Student Program

- \$320,000 increase in recurring funds for FY24
- New housing sites for students on rural clinical rotations:
 - Chester
 - Florence
 - Orangeburg
 - Seneca

Last
Fiscal
Year

742

Student clinical training placements with 263 preceptors at 196 community-based sites

1,194

Weeks of housing provided to students on rural training placements

1,619

Health professions students participating in AHEC programming

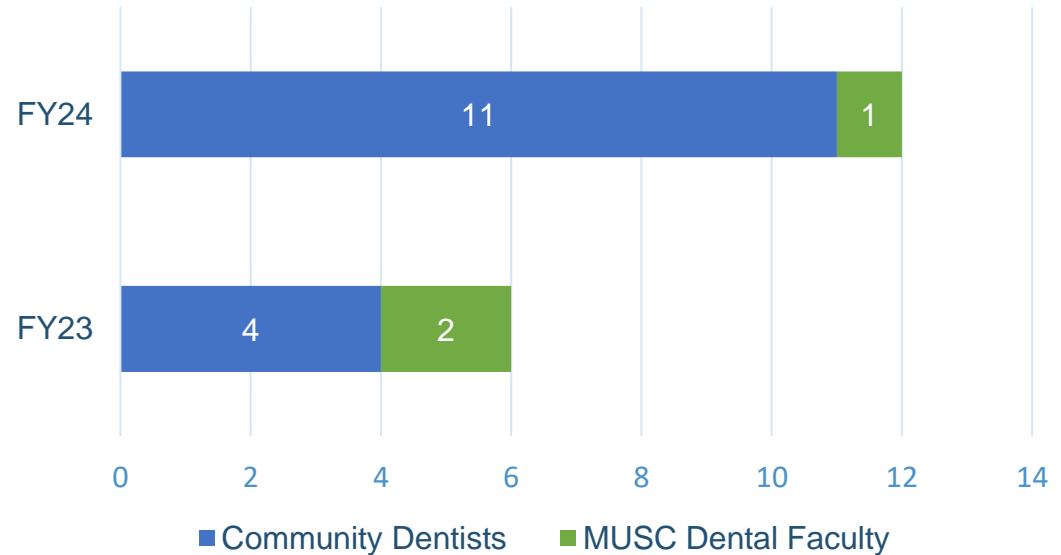
FY24 Increased Funding Update:

Recruitment & Retention Programs

Rural Dentist Loan Repayment Program

- \$250,000 increase in recurring funds for FY24
- Doubled the number of new dentists funded compared to previous year

New Rural Dentist Funding Recipients



Last Fiscal Year

98

Nurse practitioners, physicians and physician assistants participating in the Rural Incentive Grant Program

95%

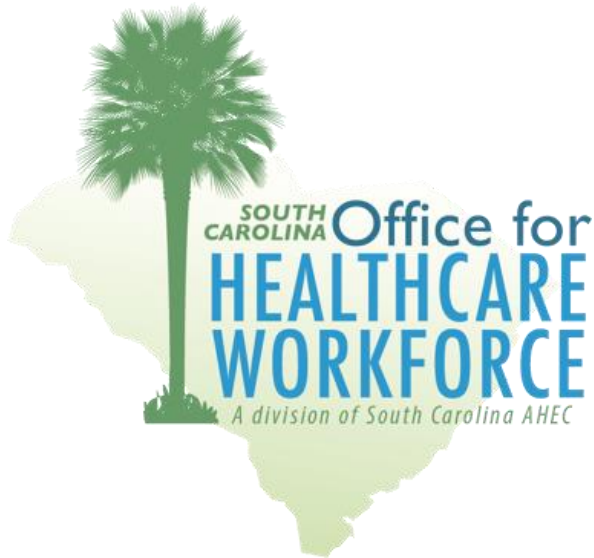
Retention rate for current Rural Incentive Grant Program participants

70

Applications received for the first offering of the Behavioral Health Loan Repayment Program (HRSA-funded)

FY24 Increased Funding Update:

Nursing Workforce Research Unit

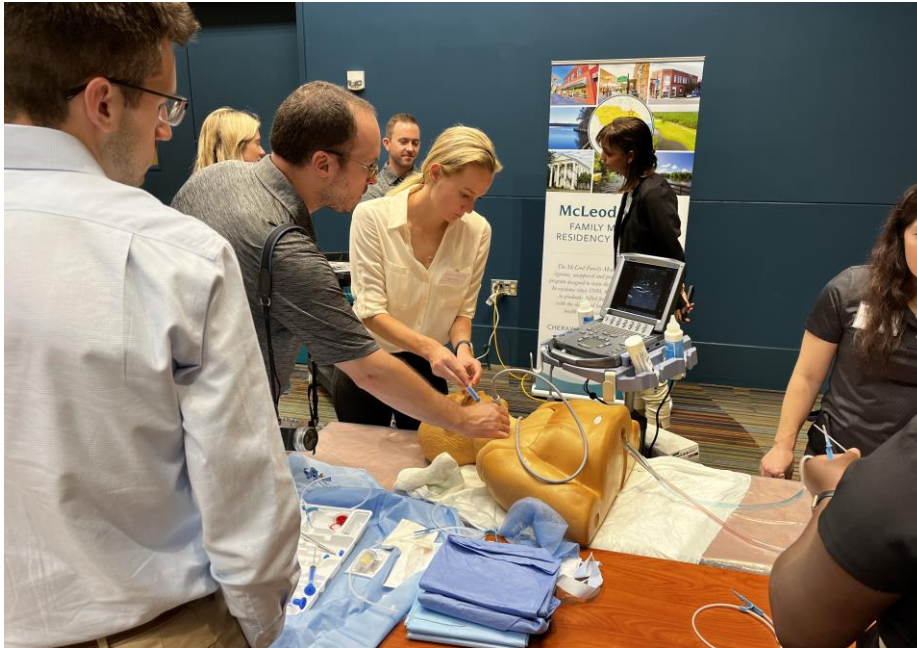


- \$500,000 increase in recurring funds for FY24 to establish dedicated nursing workforce research unit
- Accepted to the National Forum of State Nursing Workforce Centers
- Data and strategy discussions with:
 - SC Board of Nursing
 - SC Hospital Association - SC Organization of Nurse Leaders
 - Revenue and Fiscal Affairs
 - Department of Employment and Workforce
- 1 staff position hired and on-board
- 1 staff position open – interviews scheduled

Brief Program Updates

FY23 AHEC Program Highlights

Graduate Medical Education



AHEC supports family medicine residency programs in the state in a number of ways:

- AHEC convenes a statewide council of program directors from all FM residency programs in SC at least six times a year
- Funding appropriated via AHEC supports FM residency programs and faculty/project development
- AHEC recruitment events encourage students to pursue family medicine as a specialty and train in state
 - Family Medicine Interest Day
 - State booth block at the AAFP national recruitment conference

Last
Fiscal
Year

87

Medical students from 16 medical schools attended Family Medicine Interest Day

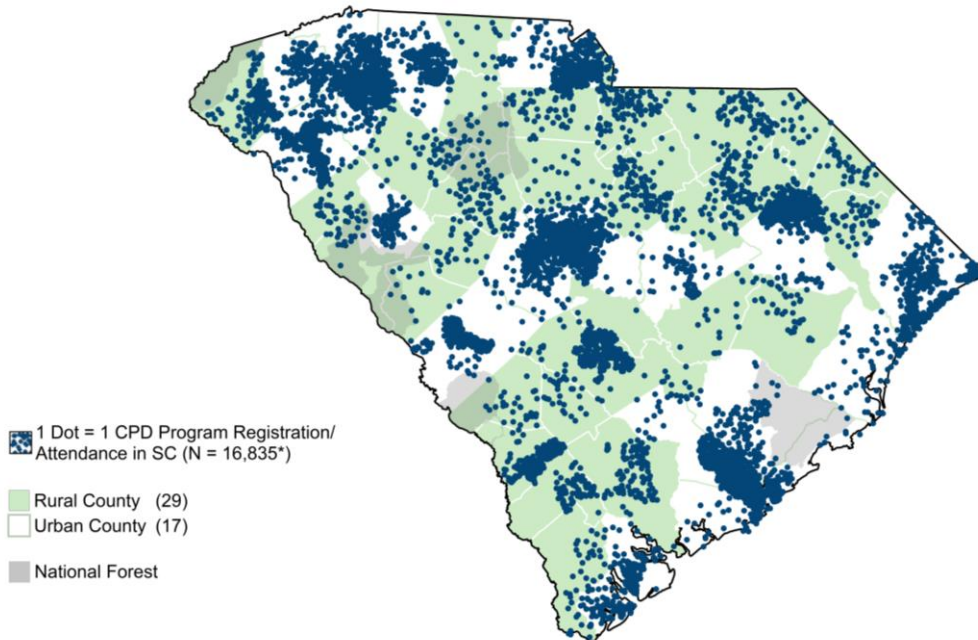
1,529

Contact hours of training accrued by residents on the AHEC Learning Portal

FY23 AHEC Program Highlights

Continuing Professional Development

South Carolina AHEC Continuing Professional Development (CPD) Participation,
South Carolina, July 1, 2022 - June 30, 2023



Note: *Data show the number of continuing professional development program registrations/attendances provided in FY2023 (7/1/2022-6/30/2023), by individuals' self-reported practice zip code. Dots are scattered randomly within the zip code area and show 16,835 records within South Carolina. Map excludes 845 out-of-state records and 2,283 records that were missing zip code.

- **12,084** registrations from health professionals in medically-underserved communities
- **2,705** registrations from health professionals in rural communities
- **55,762** total contact hours of training and education

Questions?

*South Carolina AHEC builds and supports the healthcare workforce
South Carolina needs for every community to have access to
diverse, high-quality, patient-focused care.*

www.scahec.net